

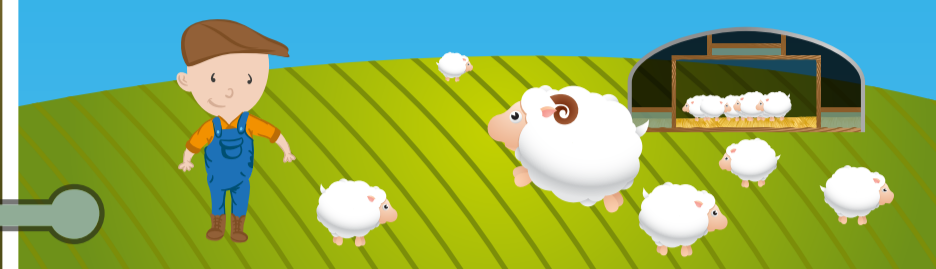
# POLYTUNNELS

## Who's buying what & where

Scotland accounts for 8.5% of all Polytunnels sold in the UK, with Aberdeenshire and The Hebrides being the most popular areas of Scotland for Polytunnel sales.



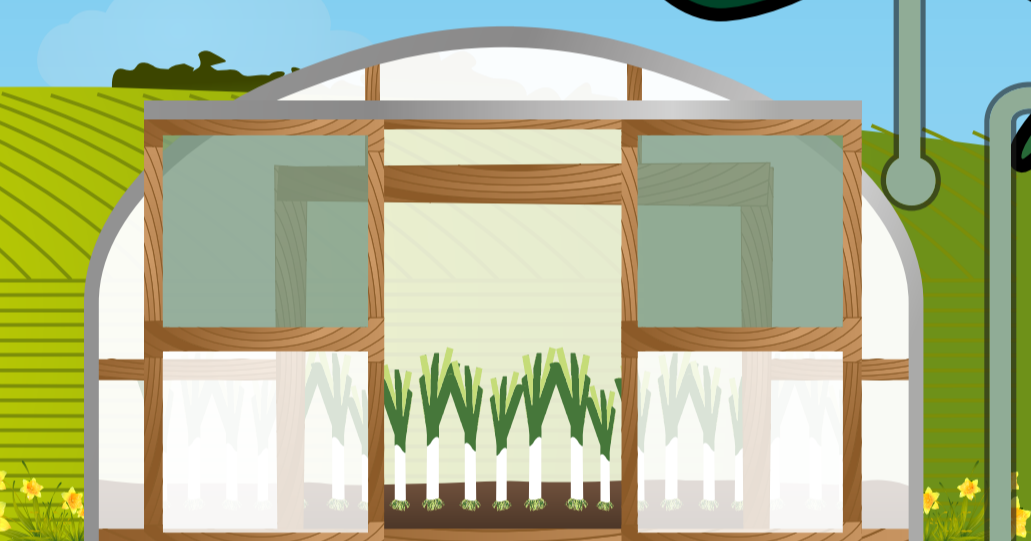
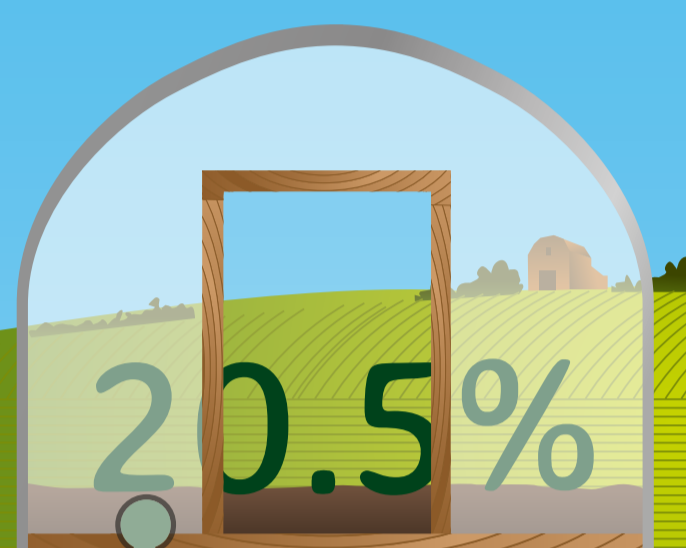
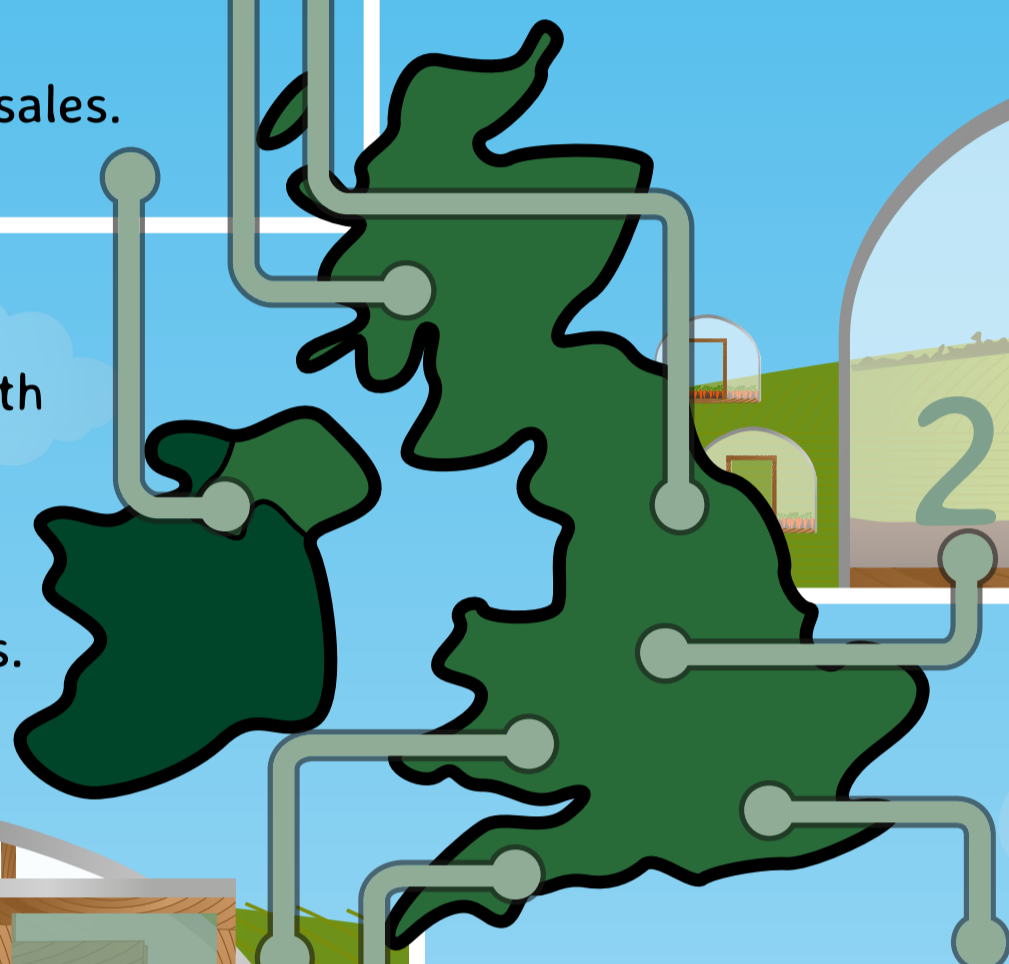
13% of Polytunnel sales take place in the North East. If you live in North Yorkshire there is a good chance you will see one as it is one of the most popular areas for Polytunnels in the whole UK.



Ireland and the North West of England accounts for 13% of all the sales of UK Polytunnels, with Lancashire being the most popular country for Polytunnel sales.

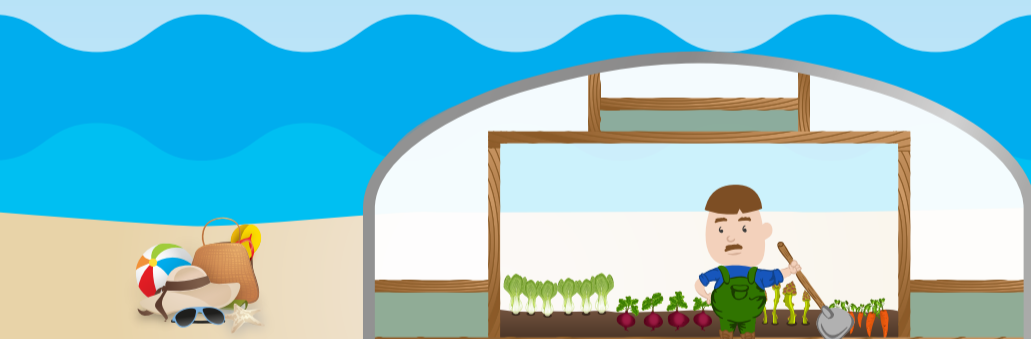
UK sales of Polytunnels are biggest in the Central region with a whopping 20.5%. Shropshire is the most popular place for Polytunnel sales in this region.

11% of all Polytunnels are bought in Wales, with allotments and gardens in Gwent and Pembrokeshire being the most popular places.



The South East accounts for 20% of all Polytunnel sales. Cambridgeshire and Kent are the most popular counties for buying a Polytunnel in the South East.

14% of Polytunnels sold in the UK are sold in the South West of England in Cornwall, Devon, Dorset, Somerset, Gloucestershire and Bristol.



### Top 5 U.K. most popular garden Polytunnel sizes



14 x 30



10 x 20



10 x 15



8 x 15



8 x 10



### Top 5 U.K. most popular commercial Polytunnel sizes



24 x 66



21 x 54



18 x 60



16 x 60



16 x 24