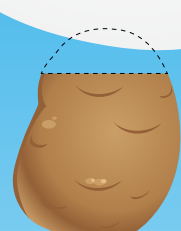


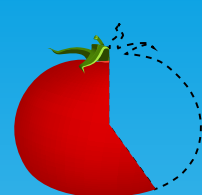
POLYTUNNELS

What are people growing under cover?



79% Vegetables

Polytunnels are most commonly used for growing a wide variety of vegetables with 79% of people surveyed growing veg such as potatoes, carrots, cauliflowers, chard, lettuce, brussels sprouts, onions, celery and leeks in their polytunnels.

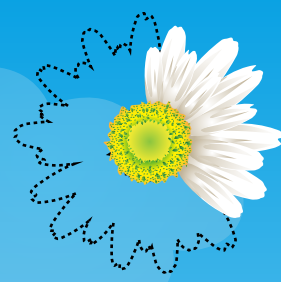
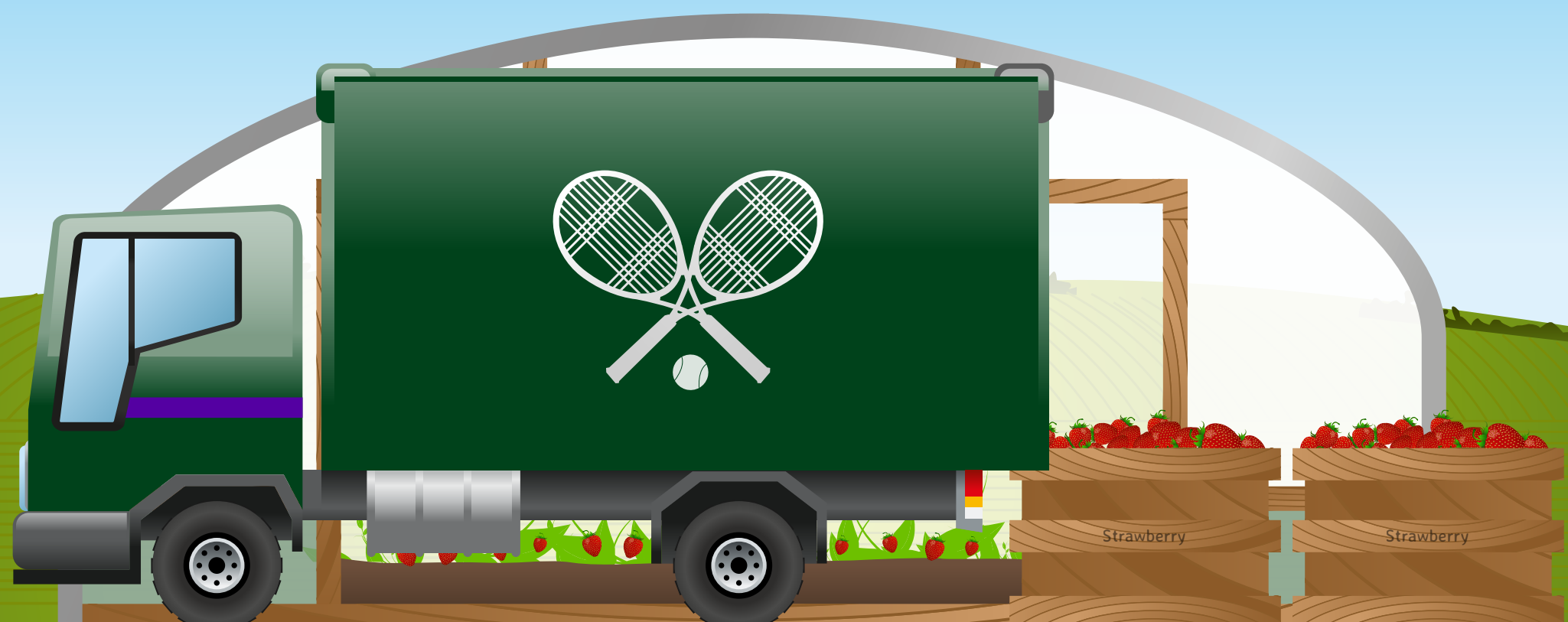


60% Fruit

60% of people grow fruit in their polytunnels, with some of the most popular choices being strawberries, melons, tomatoes, cucumbers, peppers, courgettes and squashes.

Don't worry, that is right – peppers, courgettes and squashes are indeed fruit!

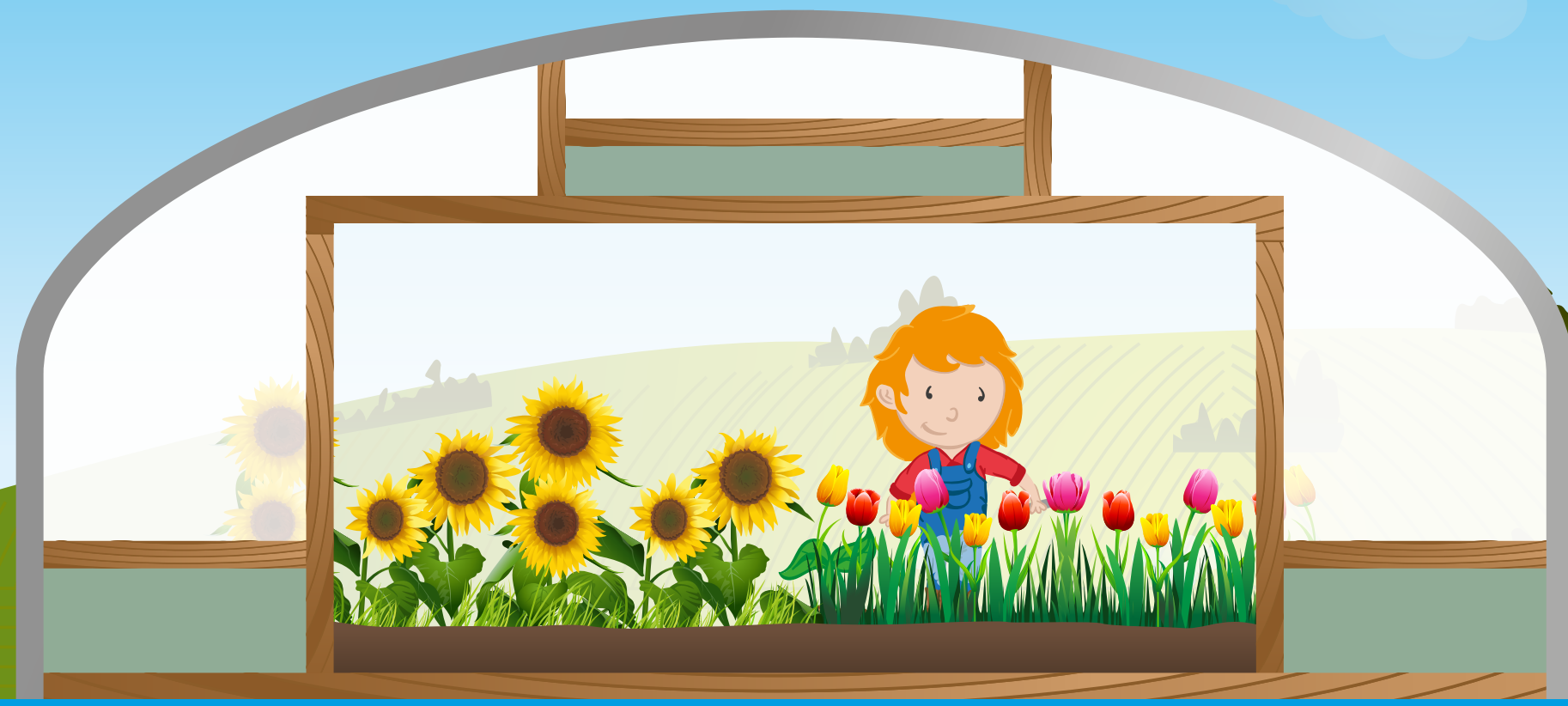
Did you know? It is said that 90% of British strawberries are grown in polytunnels with the growing season stretching from early spring to late autumn.



40% Flowers & Plants

Another popular use for a polytunnel is for growing flowers. The cut flowers which you buy on Valentine's Day are likely to have originated in polytunnels all over the world.

40% of people grow flowers or plants in their polytunnels in the UK.



Other

A polytunnel has many uses – 24% of people surveyed use their polytunnels for other purposes, with the most popular alternate use being to house sheep.

